



# EUROPEAN SOCIAL FUND COMMUNITY INITIATIVE PROGRAMME **EQUAL**

Presentation to the EQUAL Monitoring Committee  
Valletta, 1<sup>st</sup> October, 2004

MINISTERU

*ghall-*

FAMILJA U SOLIDARJETA' SOCJALI

# EQUAL Malta

- Action One: 2004 - 2005
  - Development Partnership Agreement
  - Transnational Co-operation Agreement
- Action Two: 2005 - 2007
  - Project Implementation
- Action Three: 2005 - 2007
  - Dissemination and Mainstreaming
  - National Thematic Networks
  - European Thematic Groups



# EQUAL PC

- The PC is the document implementing the programme's strategy and priorities outlined in the CIP
- The PC contains the following chapters:
  - Chapter 1 - Introduction
  - Chapter 2 - Description of the Measures
  - Chapter 3 - Ex-Ante Evaluation
  - Chapter 4 - Financial Tables
  - Chapter 5 - Programme Monitoring & Project Selection
  - Chapter 6 - Communication Strategy
  - Chapter 7 - Computerised Exchange of Data
  - Annexes



# EQUAL PC

- Introduction

- The PC contains detailed elements of the Programme at Measure level
- Drawn up by the MFSS and the MA following the approval of the CIP
- Further expertise also achieved through various Twinning Projects
- May be revised as necessary by the MC, following submissions by the MA



# EQUAL PC

- Description of the Measures

- Description of the Measure under each Thematic Priority
- Description of the institutional framework
- Description of the final beneficiaries
- Outlines the objectives at individual measure level
- Specifies the eligible actions
- Indicates the project selection criteria
- Indicates operational output, result and impact indicators
- Provides an overview of the budget allocation



# EQUAL PC

- Measure 1A - Employability
  - Facilitating access and return to the labour market for those who have difficulty in being integrated or re-integrated into a labour market which must be open to all
  - DPs to include Authorities, PES, Educational & Training Institutes, Social Partners, NGOs
  - Target Groups: youths, 55+, ex-offenders, women, disabled
  - 25% of the total EQUAL CIP



# EQUAL PC

- Measure 2C - Entrepreneurship
  - Opening up the business creation process to all by providing the tools required for setting up in business and for the identification and exploitation of new possibilities for creating employment in urban and rural areas
  - DPs to include Authorities, PES, Educational & Training Institutes, Social Partners, NGOs
  - Target Groups: youths, 55+, ex-offenders, women, disabled
  - 25% of the total EQUAL CIP



# EQUAL PC

- Measure 4G – Equal Opportunities
  - Reconciling family and professional life, as well as the reintegration of men and women who have left the labour market, by developing more flexible forms of work and support services
  - DPs to include Authorities, PES, Educational & Training Institutes, Social Partners, NGOs
  - Target Groups: women, parents
  - 25% of the total EQUAL CIP



# EQUAL PC

- Measure 5I – Asylum Seekers
  - Where eligible, helping asylum seekers to gain access to labour markets
  - DPs to include Authorities, PES, Educational & Training Institutes, Social Partners, NGOs
  - Target Groups: asylum seekers with status
  - 15% of the total EQUAL CIP



# EQUAL PC

- Measure 6J – Technical Assistance
  - Supporting the EQUAL Programme's management, monitoring, control, information and publicity and mainstreaming
  - Beneficiary: MFSS
  - Target Groups: stakeholders
  - 10% of the total EQUAL CIP



# EQUAL PC

- Financial Tables

- The Financial tables provide an overview of the total eligible cost by priority, measure and year
- Presented and divided according to:
  - Community Contribution
  - National Contribution
  - Indicative Private Contribution



# EQUAL PC

Thematic Priority	PC Measure	ESF €	Malta €	Total €
1A	EM-25%	310,291	103,430	413,721
2C	EN-25%	310,291	103,430	413,721
4G	EO-25%	310,291	103,430	413,721
5I	AS-15%	186,174	62,059	248,233
6J	TA-10%	124,116	41,372	165,488
<b>5 Priorities</b>	<b>5 Measures</b>	<b>€1,241,163</b>	<b>€413,721</b>	<b>€1,654,884</b>

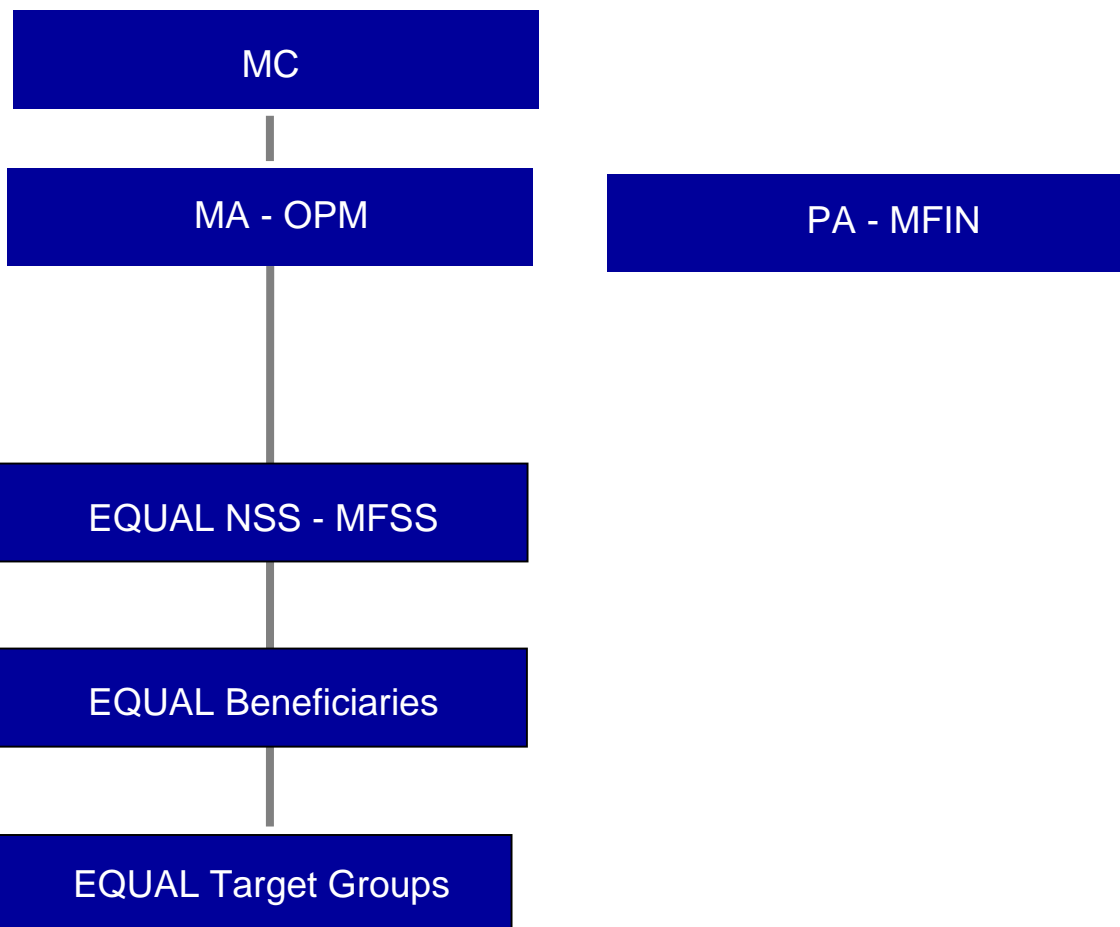


# EQUAL PC

- Programme Monitoring
  - The MC will be responsible to monitor the implementation of the CIP and to ensure that the objectives and targets of the measures are being achieved



# EQUAL PC



# EQUAL PC

- Project Selection

- Responsibility of the Project Selection Committee
- Based on the mandatory and preferential criteria under the respective PC Measure as approved by the MC
- MFSS will issue Call for Project Proposals in conjunction with MA
- Proposals received will be assessed by the EQUAL PSC



# EQUAL PC

- Communication Strategy
  - Strategy accounts for information and publicity requirements
  - To inform all stakeholders and the general public
  - To promote understanding and appreciation for EQUAL
  - To support implementation
  - To maximise transparency and accountability



# EQUAL PC

- Computerised exchange of data
  - MA to provide EQUAL Management Information System based on SFDB: IMMS
  - To be adopted by implementing bodies
  - To provide CION with up-to-date information re project implementation
  - To facilitate electronic transfer of indicator and financial data for all Measures
  - To enable Final Beneficiaries to be informed about their Projects



# EQUAL PC

- Annexes
  - MC ToR
  - CWG ToR
  - Context Indicators
  - Communication Tools



MINISTERU

*għall-*

FAMILJA U SOLIDARJETA' SOCJALI



**ESF UNIT**



**EU AFFAIRS DIRECTORATE**

**Tel: 2590 3180**

**Fax: 2590 3189**

**[esf.mfss@gov.mt](mailto:esf.mfss@gov.mt)**

**[equal.mfss@gov.mt](mailto:equal.mfss@gov.mt)**

**[www.esf.gov.mt](http://www.esf.gov.mt)**